

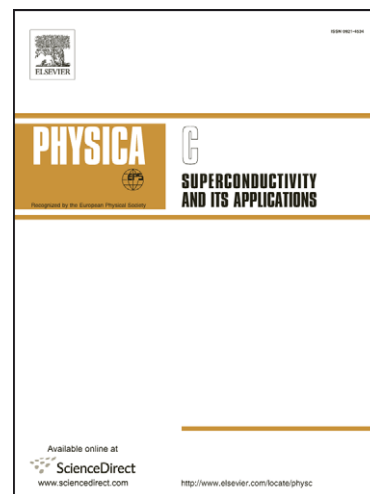
## Accepted Manuscript

Superconductivity in Entirely End-bonded Multi-Walled Carbon Nanotubes

I. Takesue, J. Haruyama, N. Murata, S. Chiashi, S. Maruyama, T. Sugai, H. Shinohara

PII: S0921-4534(07)00316-4  
DOI: [10.1016/j.physc.2007.03.286](https://doi.org/10.1016/j.physc.2007.03.286)  
Reference: PHYSC 123660

To appear in: *Physica C*



Please cite this article as: I. Takesue, J. Haruyama, N. Murata, S. Chiashi, S. Maruyama, T. Sugai, H. Shinohara, Superconductivity in Entirely End-bonded Multi-Walled Carbon Nanotubes, *Physica C* (2007), doi: [10.1016/j.physc.2007.03.286](https://doi.org/10.1016/j.physc.2007.03.286)

This is a PDF file of an unedited manuscript that has been accepted for publication. As a service to our customers we are providing this early version of the manuscript. The manuscript will undergo copyediting, typesetting, and review of the resulting proof before it is published in its final form. Please note that during the production process errors may be discovered which could affect the content, and all legal disclaimers that apply to the journal pertain.



ELSEVIER

PHYSICA



# Superconductivity in Entirely End-bonded Multi-Walled Carbon Nanotubes

I. Takesue<sup>1,4</sup>, J. Haruyama<sup>1,4,\*</sup>, N. Murata<sup>1</sup>, S. Chiashi<sup>2</sup>, S. Maruyama<sup>2</sup>, T. Sugai<sup>3,4</sup>, H. Shinohara<sup>3,4\*</sup>

<sup>1</sup>Aoyama Gakuin University, 5-10-1 Fuchinobe, Sagami-hara, Kanagawa 229-8558 Japan

<sup>2</sup>Tokyo University, 7-3-1 Hongo, Bunkyo-ku, Tokyo 113-0033 Japan

<sup>3</sup>Nagoya University, Furo-cho, Chigusa, Nagoya 464-8602 Japan

<sup>4</sup>JST-CREST, 4-1-8 Hon-machi, Kawaguchi, Saitama 332-0012 Japan

Elsevier use only: Received date here; revised date here; accepted date here

## Abstract

We report that entirely end-bonded multi-walled carbon nanotubes (MWNTs) can exhibit superconductivity with a transition temperature ( $T_c$ ) as high as 12 K, which is approximately 30 times greater than  $T_c$  reported for ropes of single-walled nanotubes. We find that the emergence of this superconductivity is highly sensitive to the junction structures of the Au electrode/MWNTs. This reveals that only MWNTs with optimal numbers of electrically activated shells, which are realized by end bonding, can allow superconductivity due to intershell effects. © 2001 Elsevier Science. All rights reserved

**Keywords:** Type your keywords here, separated by semicolons ; carbon nanotubes; superconductivity, graphite, Tomonaga-Luttinger liquid

## 1. Introduction

One-dimensional (1D) systems face some obstructions that prevent the emergence of superconductivity, such as (1) Tomonaga-Luttinger liquid (TLL) states consisting of repulsive electron-electron (e - e) interaction [1] - [3], (2) Peierls transition (charge-density waves), and (3) a small density of states, which becomes significant when the Fermi level is not aligned with van-Hove singularities (VHSs). A carbon nanotube (CN), an ideal 1D molecular conductor, is one of the best candidates for investigating the possibility of 1D superconductivity and the interplay of 1D superconductivity with the abovementioned obstructions. A variety of intriguing quantum phenomena in CNs has been reported; however, only two groups to our knowledge have experimentally reported superconductivity (e.g., with a transition temperature ( $T_c$ ) as low as ~0.4K in ropes of single-walled CNs (SWNTs)

[4] and that was identified only from the Meissner effect in arrays of thin SWNTs (diameter ~ 0.4nm)[5]). In addition, the interplay of superconductivity with the abovementioned 1D phenomena has not been investigated.

From the viewpoint of  $sp^x$ -orbital related superconductivity, it was recently reported that B-doped diamond and  $CaC_6$  could exhibit superconductivity [6]. These findings stress a high potentiality of carbon-related materials as superconductors and, hence, CNs are also promising for this purpose.

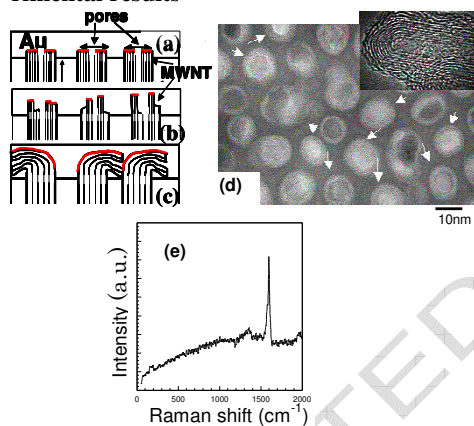
From theoretical standpoints, it was predicted in refs. [7]–[10] that the interplay of TLL states with superconductivity is highly sensitive to the phonon modes, electron-phonon (e-p) coupling, strength of the short-range effective attractive interaction obtained after screening the e-e interaction, and structures of CN ropes. These factors would permit the appearance of superconductivity in specific cases. In ref. [11] as well, it was predicted that the e-p interaction is important for superconductivity in very thin CNs with  $sp^3$  hybrid

\* Corresponding author. Tel.: +81-42-759-6256; fax: +81-42-759-6524; e-mail: J-haru@ee.aoyama.ac.jp.

orbitals and an out-of-plane optical phonon mode. It should be mentioned that these theoretical predictions have not yet been experimentally verified. To the best of our knowledge, confirmed reports of superconductivity in 1D conductors is only in organic materials [12].

Here, in refs. [13] - [15], we reported the successful realization of end-bonding of multi-walled CNs (MWNTs) that were synthesized in nanopores of alumina templates. Further, we recently realized proximity-induced superconductivity (PIS) by end-bonding MWNTs, which were prepared using the same method, in Nb/MWNTs/Al junctions [13, 14]. They proved that Cooper pairs could be effectively transported without destruction only through the highly transparent interface of the CNs/Nb junctions obtained by this end-bonding. Such entire end-bonding has never been carried out in conventional field-effect transistor (FET) structures using CNs as the channels.

## 2. Experimental results



**Fig. 1:** Schematic cross-sections of Au/MWNTs interfaces in Au/MWNTs/Al junctions prepared in nano-pores of alumina templates [13 – 15]: (a) Entire Au-end, (b) Partial Au-end, and (c) Au-bulk junctions. The solid lines in a MWNT denote the shells and the red lines denote the shells where electrical contacts to Au electrodes can be present. (d) A plane TEM image of the MWNT array. MWNTs were indicated by arrows. Inset: High-resolution cross-sectional TEM image of a typical MWNT. (e) The result of resonance Raman measurements of the MWNT at a laser energy of 2.41 eV.

In this study, we followed the method of using nanoporous alumina templates but employing some specific conditions [16] (Fe/Co catalyst and methanol gas) in order to synthesize arrays of Au/MWNTs/Al junctions (Fig.1(a)); then, we investigated the possibility of superconductivity in MWNTs. Figure 1(d) shows a plane transmission electron microscope (TEM) image of the array shown in (a). MWNTs are evidently visible in many pores. In the inset, a high-resolution cross-sectional TEM image of a MWNT is shown. The structure of this

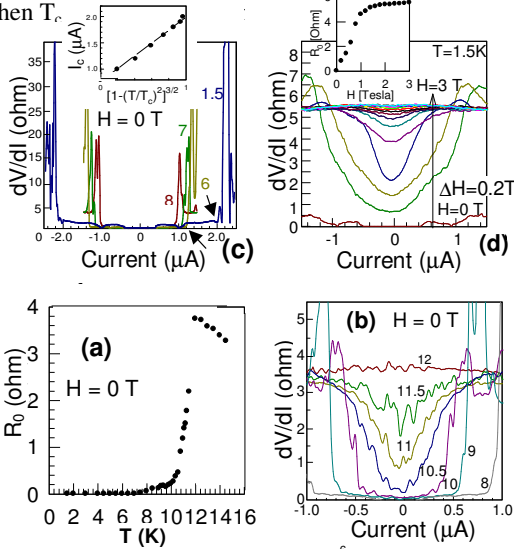
MWNT well corresponds to those in conventional MWNTs. Indeed, it was confirmed that some MWNTs includes no Fe/Co catalyst, which tends to destroy Cooper pairs, in the entire region. As shown in Fig. 1(e), a large peak is observable significantly around  $1600\text{ cm}^{-1}$  (the so-called G-band) in Raman spectrum. This strongly indicates that the MWNTs are of a high quality and do not have defects. The absence of both the ferromagnetic catalyst and defects and the high quality in the MWNTs are very different from the case of MWNTs synthesized in our previous studies [13]-[15].

In order to investigate importance of end-bonding and intershell effects for realization of superconductivity, we prepared the following three-different types of Au electrode/MWNTs junctions using this MWNT as shown in Fig.1 [17]; (1) Entire Au-end junctions (Fig.1(a)), (2) Partial Au-end junctions (Fig.1(b)), and (3) Au-bulk junctions (Fig.1(c)). Entire Au-end junctions can be realized by sufficiently cutting the MWNTs accumulated on the template surface [17]. For such junctions, it has been proved that this method can allow making contact of Au electrode to the entire circumference of the top end of one shell and making such a contact to all the shells of a MWNT [13] -[15] (red lines in Fig.1(a)), resulting in the entire end-bonding. In contrast, in the case of partial Au-end junctions that are obtained from insufficient cutting, only partial shells can have end contacts to the Au electrode (Fig.1(b)). Finally, for Au-bulk junctions that are obtained without cutting, only the outermost shell can contact with the Au electrode, as reported in previous studies [18, 19] (Fig.1(c)). Importantly, this bulk junction corresponds to those in conventional MWNT-FETs. Each structure was confirmed by high-resolution cross-sectional TEM observations.

Figure 2 shows the electrical properties of the sample with the entire Au-end junction. Figure 2(a) shows the zero-bias resistance ( $R_0$ ) as a function of the temperature.  $R_0$  increases with decreasing temperature and the following can be evidently confirmed: an abrupt superconducting transition with the onset  $T_c$  as high as 12 K exists, and the temperature where  $R_0$  drops to  $0\ \Omega$  ( $T_c$  ( $R = 0$ )) is as high as 7.8 K [20]. These values are at least about 30 and 40 times greater, respectively, than those reported for SWNT ropes [4].

Figure 2(b) shows the differential resistance as a function of the current for different temperatures. A low and broad resistance peak exists at  $T = 12\text{K}$ . This peak disappears suddenly and a resistance dip appears at  $T = 11.5\text{K}$ . The depth and width of this resistance dip monotonically increase as the temperature decreases, corresponding to the abrupt  $R_0$  drop in Fig.2(a), and attain at  $0\ \Omega$  at  $T = -8\text{K}$ . The value of the superconducting gap  $\Delta \approx 1.15\text{ meV}$ , which was estimated from the dip in the differential resistance as a function of the voltage at  $T = 8\text{K}$  in this sample, is in excellent agreement with the

Bardeen-Cooper-Schrieffer (BCS) relation  $\Delta = 1.76kT_c$ , when  $T_c$



**Fig. 2:** Electrical properties of the sample with the entire Au-end junction. A residual resistance of  $\sim 1 \Omega$  has been subtracted in the figures [20]. (a) The zero-bias resistance ( $R_0$ ) as a function of the temperature at zero magnetic field ( $H = 0$  T). (b)(c) The differential resistance as a function of the current for different temperatures  $> T_c$  (b) and  $< T_c$  (c). The numbers on each curve denote the temperatures in Kelvin. We defined the current, at which an abrupt resistance increase appears in (c), as  $I_c$ . Inset of (c):  $I_c$ , which corresponds to the current values indicated by arrows in the main panel, as a function of the temperature.  $I_c$  was normalized for the Ginzburg-Landau behavior of  $I_c$ . The solid line is provided just to eyes. (d) The differential resistance as a function of the current for different magnetic fields. The number on each curve denotes the magnetic field (in Tesla) that was applied perpendicular to the tube axis. Inset:  $R_0$  as a function of the magnetic field.

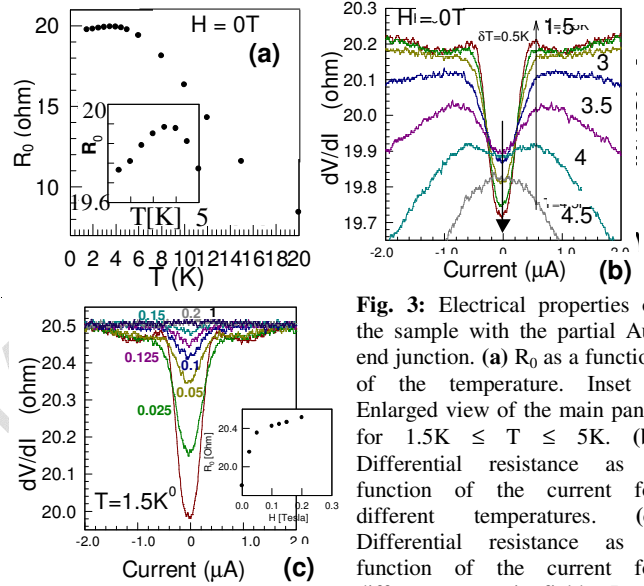
behaviour of the critical current ( $I_c$ ) below  $T_c$ , which is shown in Fig.2(c), as a function of the normalized temperature (inset of Fig.2(c)) is also in excellent qualitative agreement with the Ginzburg-Landau (GL) critical current behavior for a homogeneous order parameter,  $I_c \propto [1 - (T/T_c)^2]^{3/2}$  [21]. These agreements support that the abrupt  $R_0$  drop observed in Fig.2(a) and the corresponding dip in the differential resistance in Fig.2(b) and (c) are indeed attributed to superconductivity, which is strongly related to BCS-type superconductivity.

Figure 2(d) shows the differential resistance as a function of the current for different magnetic fields ( $H$ ). The resistance dip actually disappears due to the applied fields—similar to the conventional superconducting behaviour—as shown in the main panel of Fig.2(d). The drastic increase in  $R_0$  as the field increases from zero (inset) differs greatly from the behaviour of  $R_0$  in SWNT ropes [4]. This low critical field and the estimated

magnetic penetration length  $> 10$ nm stress that the observed superconductivity is type-II without defects for pinning of the magnetic fluxes.

In addition, we have found that most of the samples with  $T_c < 4$ K (i.e., Fig.3-samples) have indeed exhibited gradual drops in magnetization at  $H < 100$  Oe. We are carefully confirming this as Meissner effect. From this viewpoint, the present study is analogous to ref.[4], which reported superconductivity but did not mention the Meissner effect [27].

In contrast, neither a  $R_0$  drop nor a dip in the differential resistance was found in the measured temperature range in any Au-bulk junction samples.



**Fig. 3:** Electrical properties of the sample with the partial Au-end junction. (a)  $R_0$  as a function of the temperature. Inset : Enlarged view of the main panel for  $1.5 \text{ K} \leq T \leq 5 \text{ K}$ . (b) Differential resistance as a function of the current for different temperatures. (c) Differential resistance as a function of the current for different magnetic fields. Inset:  $R_0$  as a function of the magnetic field.

As shown in the main panel of Fig.3(a), in the partially end-bonded sample,  $R_0$  increases with decreasing temperature and gradually saturates. Then, only a small  $R_0$  drop (i.e., a sign of superconductivity) appears below  $T = \sim 3.5$  K without a decrease in  $R_0$  down to  $0 \Omega$  at  $T = 1.5$  K (inset of Fig.3(a)). Most of the samples have shown this sign of superconductivity.

This behaviour can be easily understood by observing the behaviour of the differential resistance as a function of the current for different temperatures as shown in Fig.3(b), which differs greatly from the results in Fig.2(b). A large and broad resistance peak is observable at  $T = 4.5$  K. It grows and broadens as the temperature decreases, corresponding to the  $R_0$  increase in Fig.3(a), and almost completely disappears at  $T = 2.5$  K. In contrast, a resistance dip with a narrow width begins to appear at the center of this peak at  $T = 4$  K and its depth monotonically deepens as the temperature decreases.

Consequently, a corresponding small drop in  $R_0$  can appear only below  $T = 3.5$  K (Fig. 3(a)), which results

from the superposition of the growth of the resistance peak and the deepening of the resistance dip at zero current. Importantly, presence of this large resistance peak prevents both the emergence of the resistance dip at  $T \geq 4.5$  K and the  $R_0$  drop at  $T \geq 3.5$  K, in contrast to Fig.2. This competition between the dips and peaks in the differential resistance has also been reported in the observation of PIS in SWNTs attached to Nb electrodes [22]. Our results are qualitatively consistent with those.

The disappearance of the resistance dip and the increase in  $R_0$  in Fig.3(c) are qualitatively similar to those in Fig.2(d). Because a small dip in the differential resistance is a sign of superconductivity, the critical field is extremely small in this case.

Here, we discuss the origins of the observed differences in the superconductivity, which strongly depended on the junction structures of Au/MWNTs. One of the origins is the effective transport of Cooper pairs from the MWNTs to the Au electrode via the highly transparent interface, which were realized only in the entire Au-end junctions, as proved in refs. [13] - [15].

Moreover, the power law behaviours in the relationships of  $G_0$  versus temperature (i.e.,  $G_0 \propto T^\alpha$ ; monotonic increase in  $R_0$  with decreasing temperature) and their interplay with the emergence of superconductivity, which strongly depends on the junction structures, were confirmed at temperatures  $> T_c$  for all the samples with different junctions. This stresses the possible presence of the competition between the superconductivity and TLL states as one of the origins of the observed junction dependence.

TLL states, which are a non Fermi-liquid state arising from 1D repulsive e-e interaction, have been frequently reported by showing power laws (i.e.,  $G_0 \propto E^\alpha$ , where  $E$  is the energy) in both MWNTs [1] and SWNTs[2]. As mentioned in the introduction, the interplay of TLL states with superconductivity has recently attracted considerable attention [13]–[15]. The value of  $\alpha$  indicates the strength of the e-e interaction and was extremely sensitive to the junction structures of electrodes/CNs. Ref. [1] reported the value of  $\alpha_{\text{bulk}} = \sim 0.3$  for an Au-bulk junction and the value of  $\alpha_{\text{end}} = \sim 0.7$  for an Au-end junction [24]. We estimated  $\alpha = \sim 0.7$ ,  $\sim 0.8$ , and  $\sim 0.3$  from the power laws at  $T > T_c$  for Figs.2 (a), 3(a), and the power law of the Au-bulk sample, respectively. These values are in good agreement with the abovementioned values of  $\alpha_{\text{end}}$  and  $\alpha_{\text{bulk}}$ . This agreement proves the actual presence of Au-end and Au-bulk junctions in our systems as well as the presence of TLLs in these MWNTs.

Only the  $G_0 \propto T^{-0.3}$  relationship was confirmed for all the temperatures in the Au-bulk junction sample. This is consistent with refs. [18, 19], which reported that only the (second) outermost shell became electrically active in the Au-bulk junction of MWNT-FETs and that exhibited TLL states in MWNTs. This explains why most of the MWNT-FETs with electrode-bulk junctions in previous studies

did not exhibit superconductivity. This result means that a SWNT with a large diameter and an electrode-bulk junction cannot take a superconducting transition because superconductivity cannot overcome TLL states [7].

In contrast, in the sample with the entire Au-end junction, the  $G_0 \propto T^{-0.7}$  relationship at  $T > T_c$  abruptly disappeared and a superconductive phase emerged at  $T_c = 12$  K as the temperature decreased. On the other hand, in the sample with the partial Au-end junction, the  $G_0 \propto T^{-0.8}$  relationship gradually saturated and a sign of superconductivity appeared at about  $T = 3.5$  K. The former observation reveals that superconductivity can easily overcome TLL states, while the latter implies that superconductivity competes with TLL states as discussed in [22]. In Figs.2(b) and 3(b), these difference in the competition between TLL states and the superconducting phase correspond to the difference in the competition between the peaks and the dips in the differential resistance, respectively.

The entire end bonding of MWNTs made all the shells electrically active, while only some of the shells were electrically active in the partial Au-end junctions. These indicate that the abovementioned competition between TLL states and superconductivity is at least strongly associated with the number of electrically active shells ( $N$ ) of the MWNTs (i.e.,  $N = 1$  for the Au bulk sample,  $N = 9$  in Fig.2(a), and  $1 < N < 9$  in Fig.3(a)). This stresses that intershell effects in the MWNTs play a key role in the emergence of high- $T_c$  superconductivity, which overcomes TLL states.

In fact, the intershell effects in MWNTs have been discussed for TLL states, predicting that TLL states are sensitive to  $N$  [1, 3] and that this theory is applicable to SWNT ropes. Furthermore, the importance of intertube effects in the appearance of the competition between superconductivity and TLL states was indeed predicted in the case of SWNT ropes [8], as described below.

TLL states were suppressed by intertube electrostatic charge coupling (i.e., coupled TLLs; sliding TLLs [23]), because the intertube single electron tunneling was prohibited due to the misalignment of carbon atoms between neighboring SWNTs with different chiralities and diameters in a rope. In contrast, intertube Cooper-pair tunneling was allowed when TLL states were suppressed and, hence, the intratube short-range effective attractive interaction obtained after screening TLL states could sufficiently grow over the SWNTs as the temperature decreased. Both these effects—and consequently  $T_c$ —were enhanced as the number of SWNTs in a rope and the strength of the intratube attractive interaction increased.

Our results can be qualitatively interpreted by replacing SWNTs in a rope in this model [8] with shells in a MWNT (i.e., replacing intertube effects with intershell effects). Because the differences in chiralities and diameters among shells in a MWNT are greater than those among SWNTs in a rope, this model can lead to more

significant results in the case of MWNTs (e.g., higher  $T_c$ ) [28]. For a quantitative interpretation of these intershell effects, it is crucial to experimentally clarify the dependence of  $T_c$  on  $N$ ,  $\alpha$ , and the strength of the intrashell attractive interaction.

For future research, the following investigations are required: (1) the reproducibility of the entire end-bonding and the high  $T_c$  should be improved, (2) presence of the Meissner effect should be carefully confirmed, (3)  $T_c$  should be increased by intentional carrier doping (e.g., B and Ca), (4) the influence of curvature (i.e., a thin tube structure) in MWNTs on the e-p interaction and its interplay with  $T_c$  [11, 26] should be investigated in comparison with  $MgB_2$ , graphite-based superconductors [6], and alkali-doped fullerenes, (5) the influence of coupling of neighboring MWNTs in an array should be studied because this might screen the e-e interaction, and (6) the interplay of VHSs in MWNTs with  $T_c$  should be clarified. With regard to point 4, our MWNT may include a thin SWNT (diameter  $\ll 1$  nm) in the core [11], because only the entire end-bonding makes it possible to make contact to this thin SWNT. Finally, these superconducting MWNTs are expected to be applied for molecular quantum computation [14, 19, 25]. A MWNT can be expected to be a molecular conductor, which is promising for 1D superconductivity.

### Acknowledgements

We are grateful to J.Akimitsu, R.Saito, S.Saito, S.Tarucha, Y.Iye, M.Tsukada, J.Gonzalez, H.Bouchiat, E.Demler, R.Barnett, R.Egger, G.Loupas, J.-P. Leburton, D.Loss, and M.Dresselhaus for fruitful discussions and encouragement. We also thank N.Sugiyama for acquiring the nice plane TEM images and J.Mizubayashi for the assistance in obtaining the Raman measurements.

### References

- [1] A.Bachtold, et al., Phys.Rev.Lett. 87, 166801 (2001)
- [2] M.Bockrath, et al., Nature 397, 598 (1999); Z.Yao, et al., Nature 402, 273 (1999); H.Ishii, et al., Nature 426, 540 (2003)
- [3] R.Egger, Phys.Rev.Lett. 83, 5547 (1999)
- [4] M. Kociak, et al., Phys. Rev. Lett. 86, 2416 (2001)
- [5] Z. K. Tang, et al., Science 292, 2462 (2001)
- [6] E.A.Ekimov et al., Nature 428, 542 (2004); N.Emery et al., Phys.Rev.Lett. 95, 87003 (2005)
- [7] D.Loss and T.Martin, Phys. Rev. B 50, 12160 (1994-II)
- [8] J.Gonzalez, Phys.Rev.Lett. 88, 076403 (2002); A.Sedeki, et al., Phys.Rev.B 65, 140515(R) (2002); J.Gonzalez, Phys.Rev.Lett. 87, 136401 (2001)
- [9] De Martino and R.Egger, Phys.Rev.B 67, 235418 (2003)
- [10] J.Gonzalez, et al., Phys.Rev. B 63, 134421 (2001)
- [11] R.Barnett, E.Demler, and E.Kaxiras, Phys.Rev.B 71, 035429 (2005)
- [12] I.J.Lee, et al., Phys. Rev. Lett. 78, 3555 (1997)
- [13] J.Haruyama, et al., Phys.Rev.B 68, 165420 (2003); Appl.Phys.Lett. 84, 4714 (2004); Microelectronics Journal 34, 537 (2003); Physica C 408, 85 (2004)
- [14] J.Haruyama, et al., Phys.Rev.Lett. In submission; Physica Stat. Sol. (b) 242(2), 265 (2005)
- [15] J. Haruyama, et al., Phys. Rev. B 65, 33402 (2002); Phys.Rev.B, 073406 (2001)
- [16] S. Maruyama, et al., Chem. Phys. Lett. 360, 229 (2002).
- [17] The electrochemical deposition time of the Fe/Co catalyst and the time taken for ultrasonic cleaning for cutting the MWNTs [13], which accumulated on the template surface, were optimized for each structure.
- [18] A.Bachtold, et al., Nature 397, 673 (1999); M.R.Buitelaar, et al., Phys.Rev. Lett. 88, 156801 (2002)
- [19] M.R.Buitelaar, et al., Phys.Rev. Lett. 89, 256801 (2002)
- [20] The residual resistances under a superconductive state were  $R_{sc} = \sim 1 \Omega$ . In our measurement method, this  $R_{sc}$  includes the resistance of the Al substrate (Au electrode) ( $< 1 \Omega$ ) as well as the intrinsic  $R_{sc}$  due to the quantum resistance  $R_Q$ . When the resistance of Al (Au) is assumed to have a minimum value of  $0.5 \Omega$ , the intrinsic residual resistance due to  $R_Q$  is  $0.5 \Omega$ . Therefore, the number of MWNTs in a superconductive state,  $N_{sc}$ , can be estimated to be at least 120 by assuming six conductance channels, which was increased from two channels by possible doping effect, per one shell and nine such metallic shells per one MWNT (i.e., the resistance of one MWNT is  $[R_Q = h/2(2e)^2]/6/9 = 60 \Omega$  and  $N_{sc} = 60/0.5 = 120$ ). The mean free path  $l_e \approx (L/R_{room})(R_Q/N_{sc})$  and the superconducting coherence length  $\xi \approx [(h/2\pi)v_F]/\Delta$  can also be estimated to be  $\sim 1.4 \mu m$  and  $\sim 0.5 \mu m$ , respectively [4].
- [21] M.Tinkam, *Introduction to Superconductivity* (McGraw-Hill, New York 1996)
- [22] A.F.Morpurgo et al., Science 286, 263 (1999)
- [23] A.Vishwanath et al., Phys.Rev.Lett. 86, 676 (2001)
- [24] This interpretation of the origin of power laws is still debatable (e.g., a Coulomb blockade that is strongly coupled with its external electromagnetic environment and a phenomenon related to 1D localization).
- [25] J.Haruyama, et al., Physica E 24, 32 (2004); P.Recher and D. Loss, Phys. Rev. B 65, 165327 (2002); C.Bena et al., Phys.Rev.Lett.89, 037901 (2002)
- [26] D. Connetable et al., Phys. Rev. Lett. 94, 015503 (2005)
- [27] This group has recently reported possible diamagnetization (cond-mat/0511142)
- [28] J.Gonzalez et al., cond-mat/0603292